

EPR imaging characterization of natural and synthetic materials

Timopheyy V. Popov

Joint Advanced Students School
St.-Petersburg - 2006

Contents:

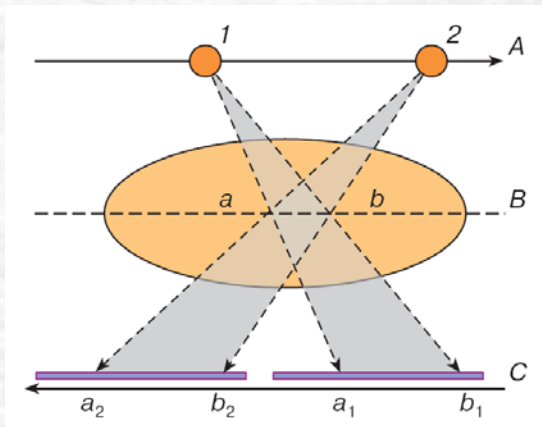
- Introduction
- MR theory
- Mathematical problems of computer-aided tomography
- EPR imaging
- Conclusion

Tomography

(gr. tomos - layer, grapho - write)

Simple methods:

- anatomic
- linear X-ray



Computer methods:

- computed (CT, SCT)
- magnetic-resonance (MRT)
- positron-emission (PET)
- ultrasonic (US)
- laser
- electron-impedance

Introduction

Questions to be answered during report:

- What a magnetic-resonance phenomenon is?
- How can we obtain useful information from spectra?
- Which

Intro – subject review

- What is the aim of tomography actually for living science?
- T is an individual frame of knowledge with application in medicine, nanotechnology, chemistry and so on
- EPR imaging is the only method of inspection electron density distribution in a sample

Magnetic properties of atom

Nucleus:

– has a spin momentum **I**

$$I = 0; 1/2; 1; 3/2...$$

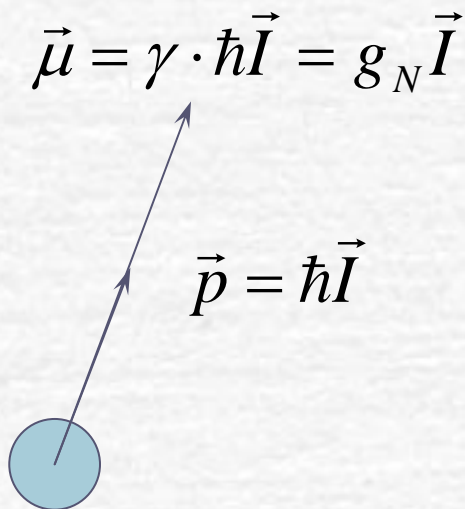
Electron:

– has a orbital momentum **L**

$$L = 0; 1; 2; 3...$$

– has a spin momentum **S**

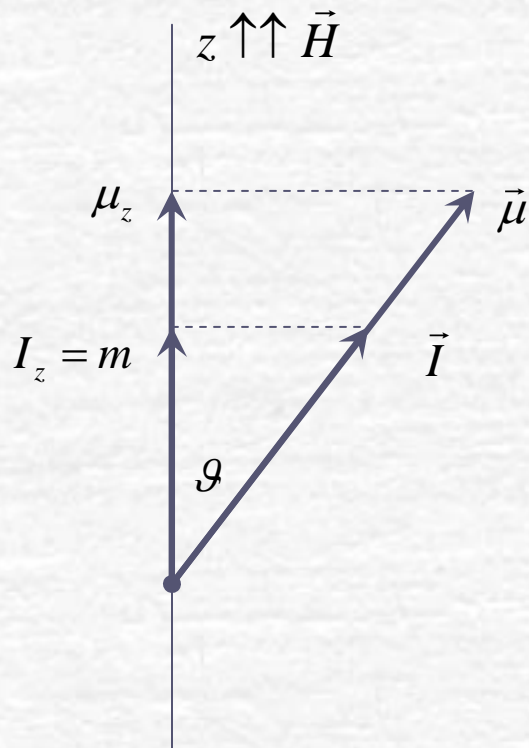
$$S = 1/2$$



Magnetic properties of atom

Interaction with external field:

$$E = -(\vec{\mu}, \vec{H}) = -\mu H \cos \vartheta = -\mu_z H$$

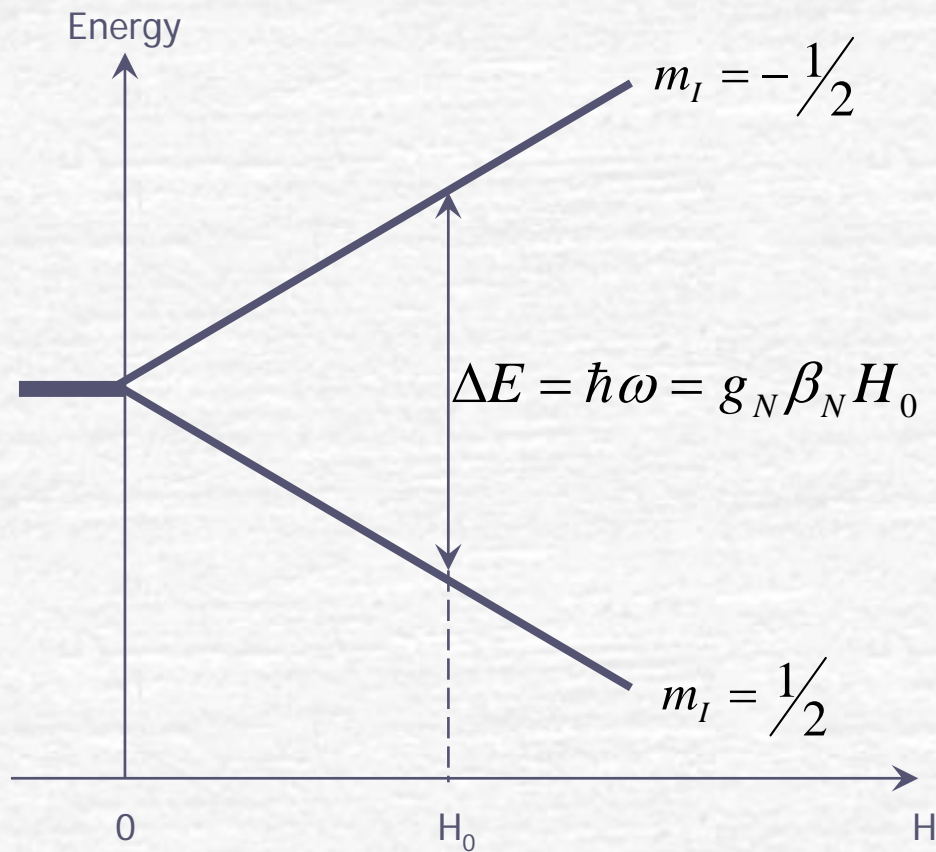


Fixed momentum orientations



Discreet energy levels

Energy levels of nucleus



Interaction energy:

$$E = -\gamma \cdot \hbar H I_z = -g_N \beta_N H I_z$$

$$\beta_N = \frac{eh}{2Mc} \quad \text{nuclear magneton}$$



Energy levels of electron

MR theory – classification

- NMR
- Nuclei with non-zero nuclear spin (^1H)
- Ask help
- EPR
- Substance with odd number of e (^1H)
- Substance with unpaired es on valence shell without chem link (VO)
- Free radicals (methyl-r)

MR theory – absorption line

- Which information can we obtain from EPR spectra?
- FS & HFS & SHFS
- g-factor
- Line width & line shape
- Integral intensity

MR theory – CW-method

- Block-scheme of spectrometer
- Sweeping magnetic field and synchronous detecting of signal
- First derivative form of absorption line
- Aims of sweeping field

MR theory – my examples

- Ask S.M. about good examples...
- in progress

Radon transformation

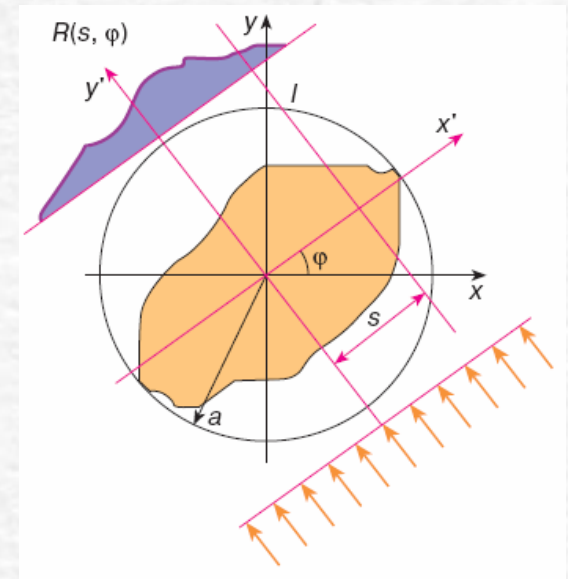
1. The methods of projection data acquisition;
2. Means of tomographic images reconstruction:
 - Back-projection algorithm;
 - De-convolution algorithm;
3. Examples

Radon transformation

Equation of line l in x - y -frame:

$$x \cos \varphi + y \sin \varphi - s = 0$$

Rotation of axes:
$$\begin{cases} x = x' \cos \varphi - y' \sin \varphi \\ y = y' \sin \varphi + x' \cos \varphi \end{cases}$$



Equation of line l in new coordinates: $x' - s = 0$

Radon image:

$$R(s, \varphi) = \int_{-\infty}^{\infty} f(s \cos \varphi - y' \sin \varphi, s \sin \varphi + y' \cos \varphi) dy'$$

$$R(s, \varphi) = \int_{-\sqrt{a^2 - s^2}}^{\sqrt{a^2 - s^2}} f(s \cos \varphi - y' \sin \varphi, s \sin \varphi + y' \cos \varphi) dy'$$

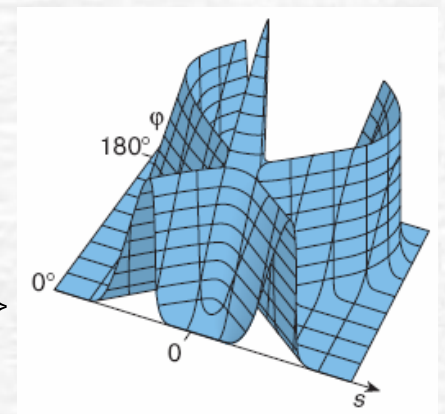
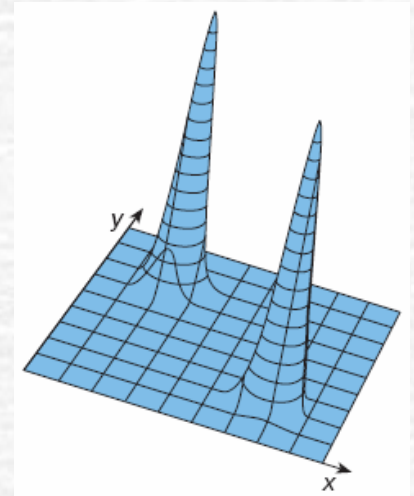
Radon transformation

2 Gauss impulses:

$$f(x, y) = \sum_{i=1}^2 \exp \left\{ -\frac{(x - x_i)^2 + (y - y_i)^2}{2b^2} \right\}$$

Radon image of $f(x, y)$:

$$R(s, \varphi) = \sum_{i=1}^2 b\sqrt{2\pi} \exp \left\{ -\frac{(x_i \cos \varphi + y_i \sin \varphi - s)^2}{2b^2} \right\}$$



Back projection algorithm

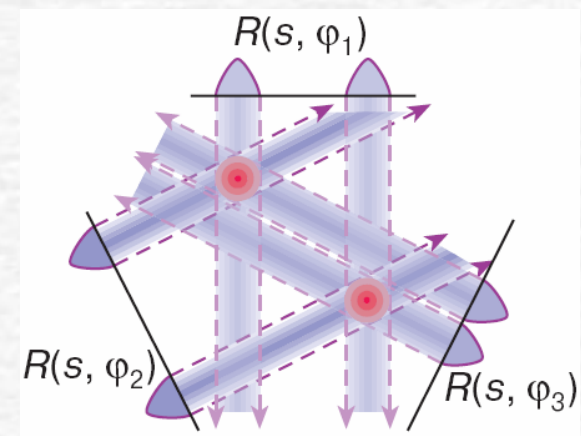
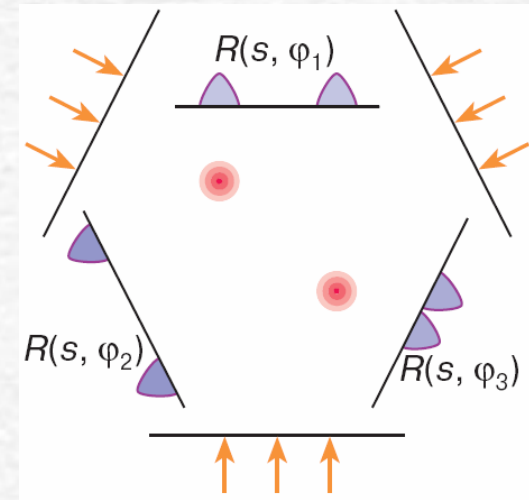
1. Fixing the angle φ in $R(s, \varphi)$
2. Stretch 1D function $R(s, \varphi)$ in x - y -plane

Back-projected image:

$$R_\varphi(x, y) = R(x \cos \varphi + y \sin \varphi, \varphi)$$

Summary image:

$$\hat{f}_{on}(x, y) = \int_0^\pi R(x \cos \varphi + y \sin \varphi, \varphi) d\varphi$$



Back projection algorithm

Main disadvantage:

Image contrast is too low :(

1. Original phantom
2. Radon image (180 projection)
3. Back-projected phantom



1

2

3

Deconvolution algorithm

$$f(x, y) = \int_0^{\pi} \tilde{R}(x \cos \varphi + y \sin \varphi, \varphi) d\varphi$$

- original function

$$\tilde{R}(x \cos \varphi + y \sin \varphi, \varphi) = \tilde{R}(s, \varphi) = \int_{-a}^a h(s_1) R(s - s_1, \varphi) ds_1$$

- convolution product

$$h(s_1) = \frac{1}{2\pi} \int_{-\infty}^{\infty} |\omega| \cos(\omega s_1) d\omega$$

- Fourier image of $|\omega|$



1

2

3

4

5

EPR Imaging – experiment

- Summing up 2 theories
- Adding MF gradient
- Spectral line broadening, frequency coding
- Radon transform application

EPR Imaging - properties

- EPR imaging resolution (compare with MRI)
- Practical limitations

EPR Imaging – examples

- Radicals
- Applications to mineral samples (radiation defects)
- Skin experiments

Conclusion

- Development difficulty
- Limitations of using *in vivo*
- Further perspectives and so on